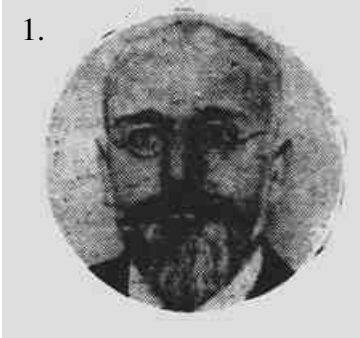


Florence Lockwood – Worksheet 2

Florence Lockwood's diaries cover the period of the First World War and the peace settlement of the early 1920s (1914-1924). The extract is from Dec 4, 1916. Use the extract to answer the following questions...

1.



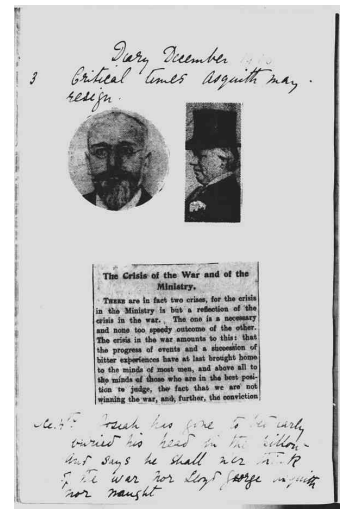
Florence E Lockwood, Black
Rock Mills, Linthwaite, diary.
KC329/2/067a
Kirklees (GB 204)

1. Florence Lockwood has cut out this picture from a newspaper. Who is it a photograph of?

2.



2. Who is this a photograph of?



3. Using the extract from the *The Times*, Monday, Dec 04, 1916; pg. 9; Issue 41341; col E **Reconstruction**. Prime Minister's Decision., Mr. Lloyd George's Stand., A Small War Council. *From Our Parliamentary Correspondent*. Compare this to the short extract from Florence Lockwood's diary. What are the key points that you learn about the government and the war at this time?

4. From the diary extract and the fact that Florence Lockwood has taken the time to write about the subject and include newspaper cuttings, what appears to be Florence's opinion of the war? What do we learn about her husband's view on the war and politics surrounding it?

<http://www.historytoherstory.org.uk>